

Kase on Bear Market Trading Strategies

Dean Rogers, CMT

Senior Analyst



Standard Disclaimer

The risk in trading and hedging commodities, commodity futures, commodity options, derivative instruments and any other financial instrument can be substantial. Both traders and hedgers can be subject to mark-to-market losses and the resultant calls for additional margin deposits, could potentially exceed the original deposit. Anyone contemplating the use of commodities, commodity futures, commodity options, derivative instruments and any other financial instrument for either speculative or hedging transactions should therefore carefully consider whether such activity is suitable based upon commercial requirement and the financial condition of the person or organization so engaged.

Information contained herein or otherwise transmitted by Kase is not to be considered as an offer or advice to sell or a solicitation or advice to buy commodities, commodity futures, commodity options, derivative instruments and any other financial instrument. Kase and Company, Inc. (Kase) makes no guarantees, either express or implied, regarding the application of either its software, or comments, either written or oral. In no way is any information transmitted by Kase including but not limited to publications, class materials, any oral comments by Kase, its employees or sub contractors, any of Kase's text or software products, or any other communication by Kase, its employees or sub contractors, directly or indirectly, in person or via media to be construed as Kase's providing advice or as consulting, either directly or indirectly, as to the advisability of buying or selling futures contracts, any physical commodity, commodity options or any other financial instrument, or any other action. Kase will not be responsible for any errors or omissions, typographical or otherwise. Expressions of opinion are not recommendations relating to Viewer's actions or non actions and are subject to change without notice.


Hypothetical or simulated performance results have certain inherent limitations. Unlike an actual performance record, simulated results do not represent actual trading or hedging. Also, since the trades or hedges have not actually been executed, the results may have under- or over-compensated for the impact, if any, or certain market factors, such as lack of liquidity. Simulated trading and hedging programs in general are also subject to the fact that they are designed with the benefit of hindsight. No representation is being made that any account will or is likely to achieve profits or losses similar to those shown, discussed or transmitted in any way by Kase. **THE RISK OF LOSS IN TRADING AND HEDGING COMMODITIES CAN BE SUBSTANTIAL.** Viewer should, therefore, carefully consider whether such trading or hedging is suitable for the Viewer in light of the Viewer's financial condition. Information provided through any Kase service is not to be considered as an offer to sell or a solicitation to buy commodities, nor does Kase make any guarantees. Expressions of opinion are subject to change without notice.

Webinar Agenda

- Determine Trend Direction
- Identify Support and Resistance Using Fibonacci Projections and Retracements
- Entry Rules
- Stops
- Exit Rules
- Trade Examples



[This Photo](#) by Unknown Author is licensed under [CC BY-ND](#)



Kase Charts and Indicators for NinjaTrader 7 and 8

Kase Xrange Bars

Kase Swing

Kase StatWare

KaseX

Kase Xrange Bars

- High-Low Range
- Target range based on underlying time bar
- Adjust to daily changes in volatility
- Tick and time throttles
- Built with ticks
- No fake “ghost” data

▼ Data Series	
Price based on	Last ▼
Type	Xrange ▼
MinuteValue	10
MinTicks	3
MinSeconds	3

Kase Swing



Kase StatWare



KaseX



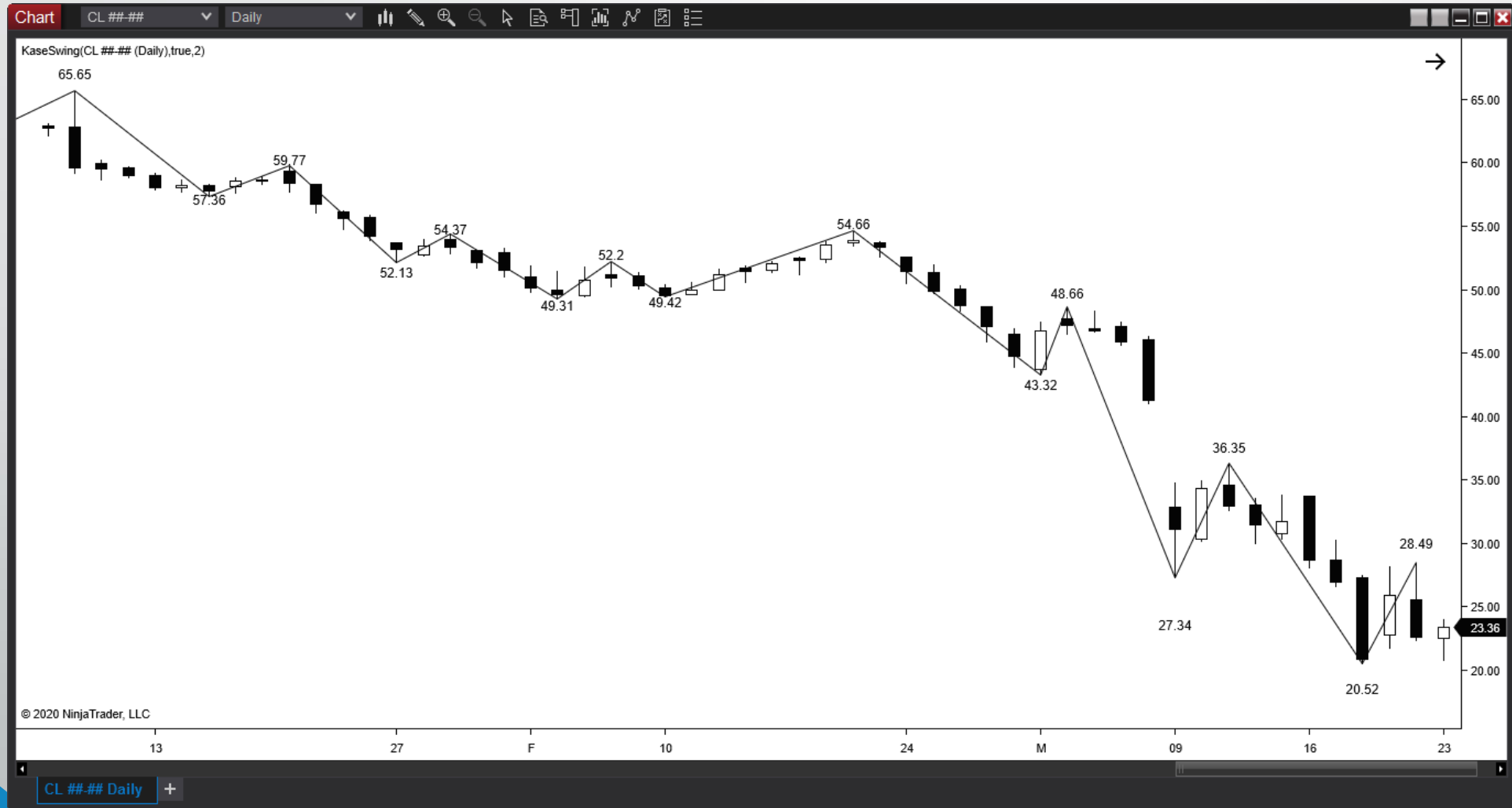


Determine Trend Direction

Visually with Kase Swing

Kase Trend Indicator

Kase Swing - WTI Crude Oil



Kase Trend – WTI Crude Oil





Identify Support and Resistance

Fibonacci Wave Projections

Fibonacci Retracements

Confluence Points

Fibonacci Wave Projections and Retracements

Kase Wave Projections

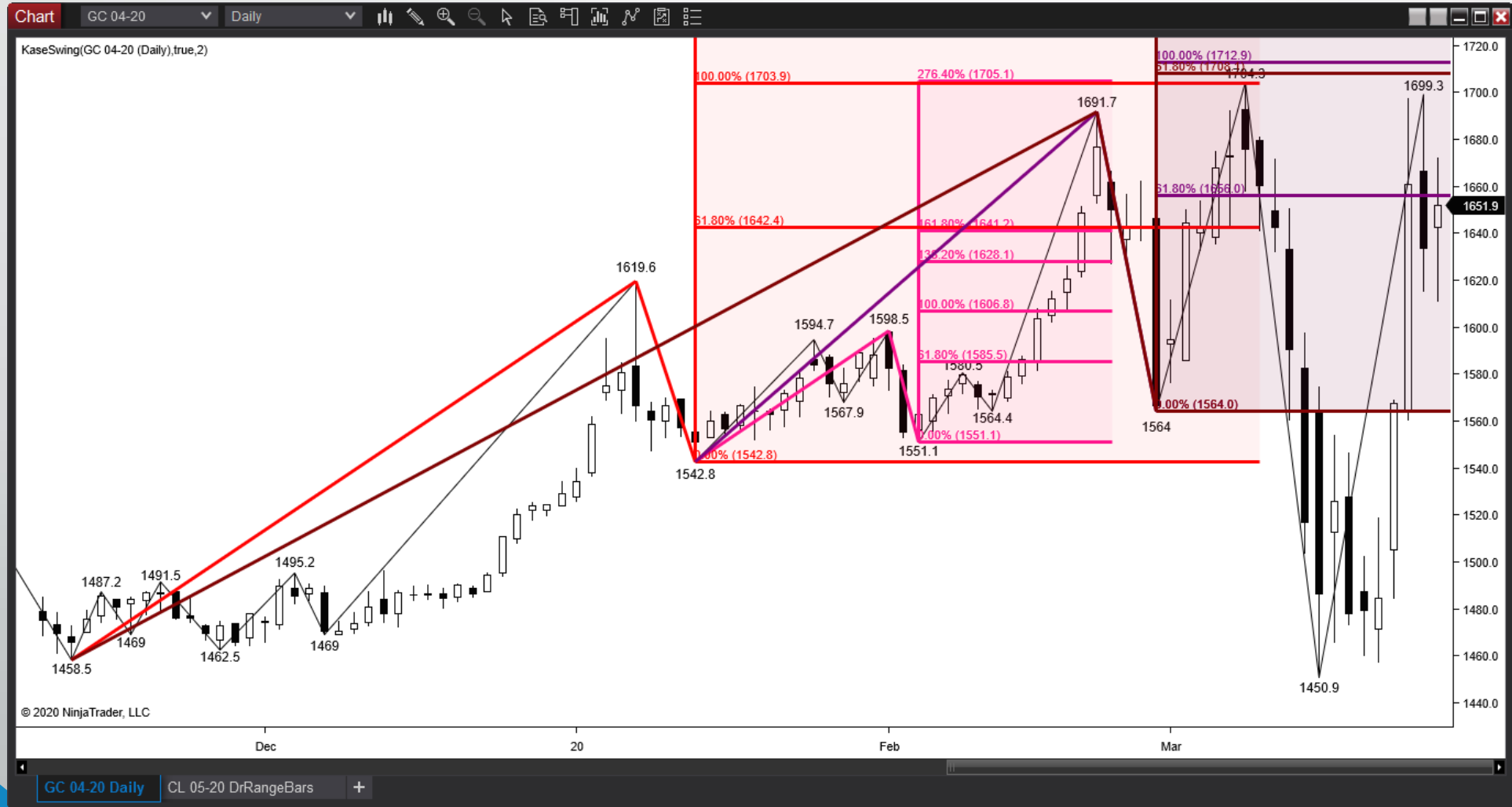
- **Smaller Than = 0.618**
- **Equal To = 1.00**
- Intermediate = 1.382
- **Larger Than = 1.618**
- XC = 2.764

Kase Retracements

- 0.21 (0.236)
- **0.382**
- 0.50
- **0.618**
- 0.78 (0.764)
- 0.89

1	1	2	3	5	8	13	21	34	55	89	144	
	1.000	2.000	1.500	1.667	1.600	1.625	1.615	1.619	1.618	1.618	1.618	144/89
	1.000	0.500	0.667	0.600	0.625	0.615	0.619	0.618	0.618	0.618	0.618	89/144
		0.500	0.333	0.400	0.375	0.385	0.381	0.382	0.382	0.382	0.382	55/144
			0.333	0.200	0.250	0.231	0.238	0.235	0.236	0.236	0.236	34/144

Confluence – April 2020 Gold



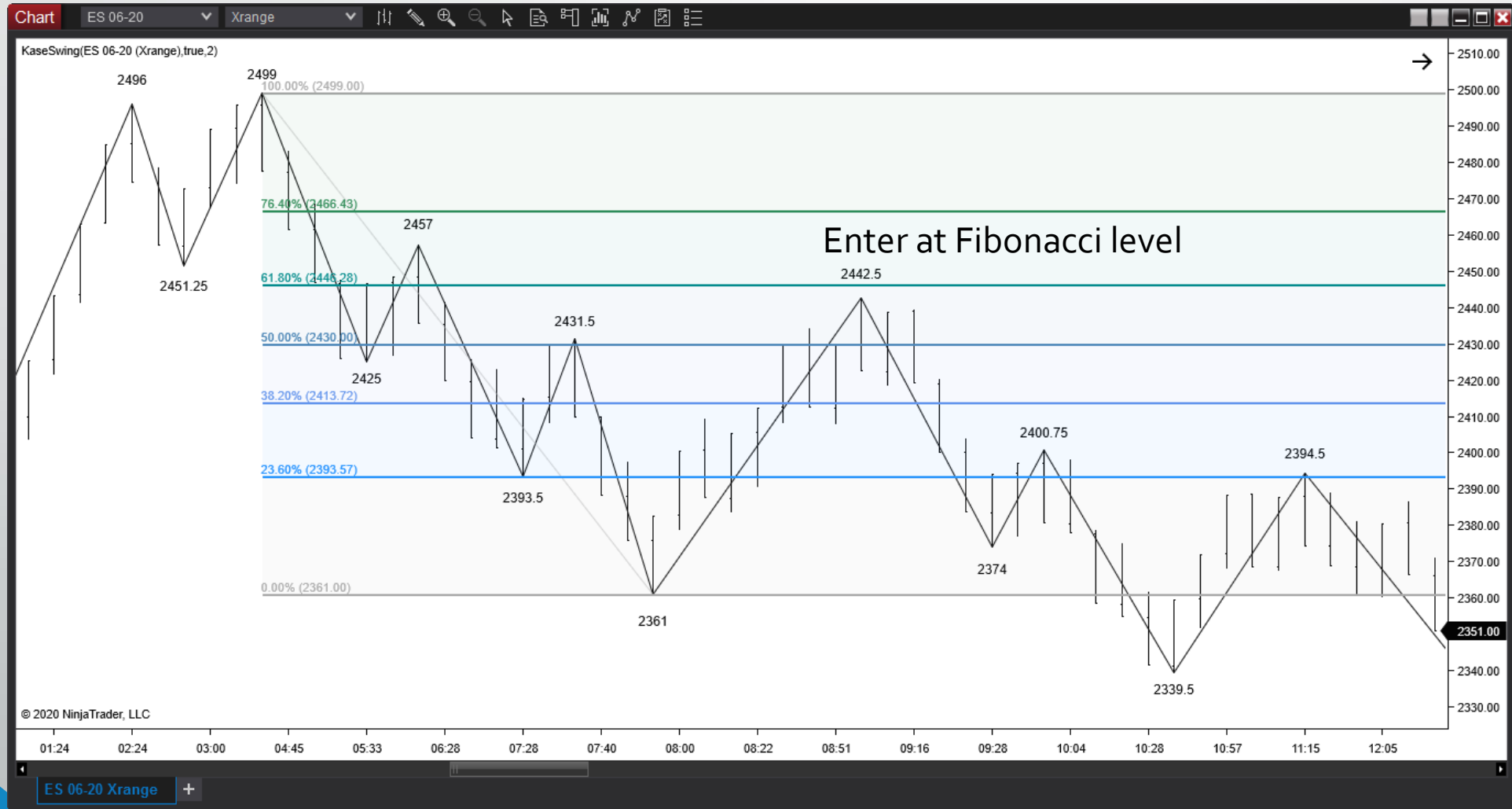


Entry Rules

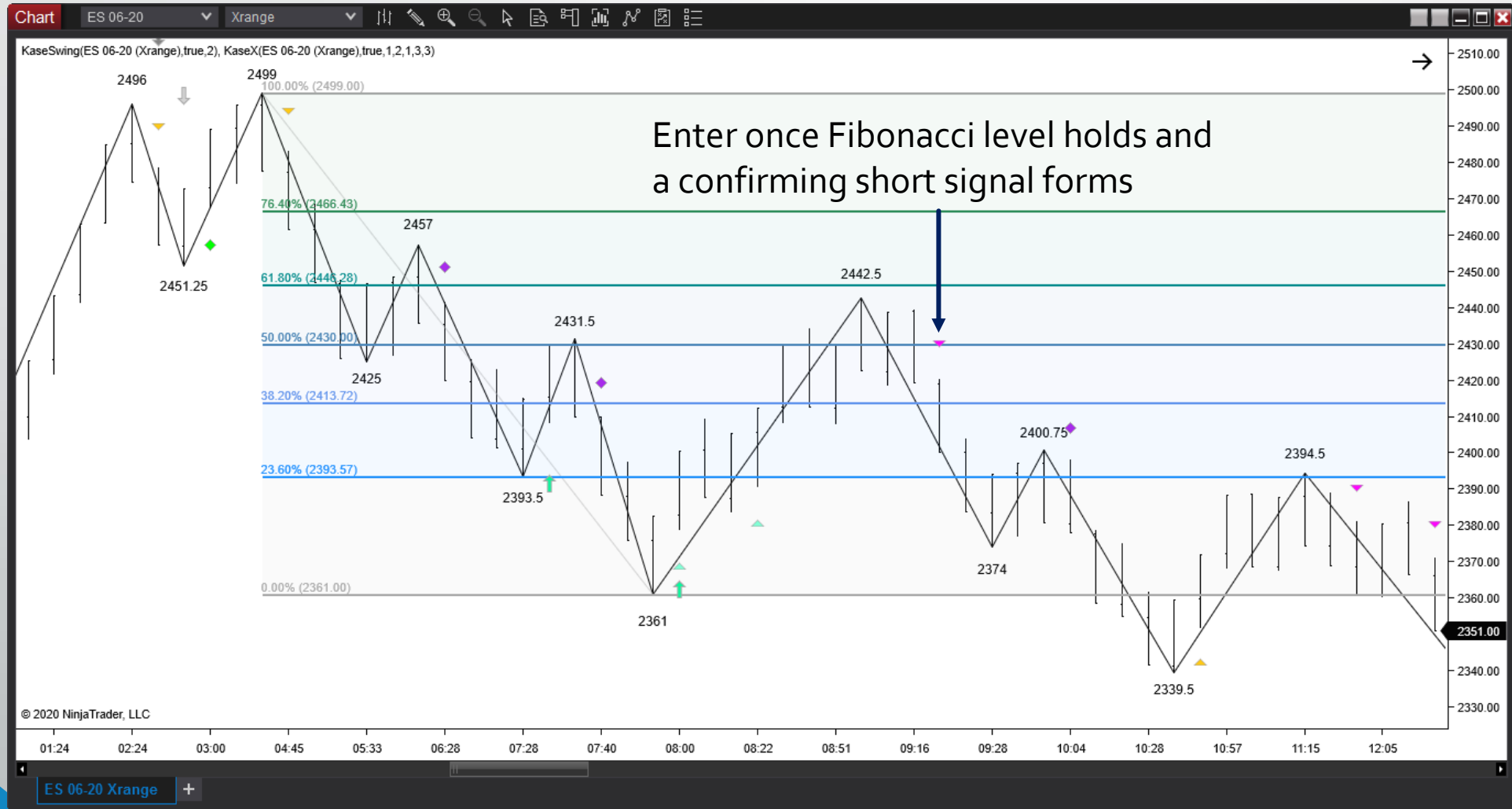
Short on Tests of Resistance

Kase StatWare or KaseX Confirming Short Signals

ESM20 – 15 Min Kase Xrange Bar



ESM20 – 15 Min Kase Xrange Bar





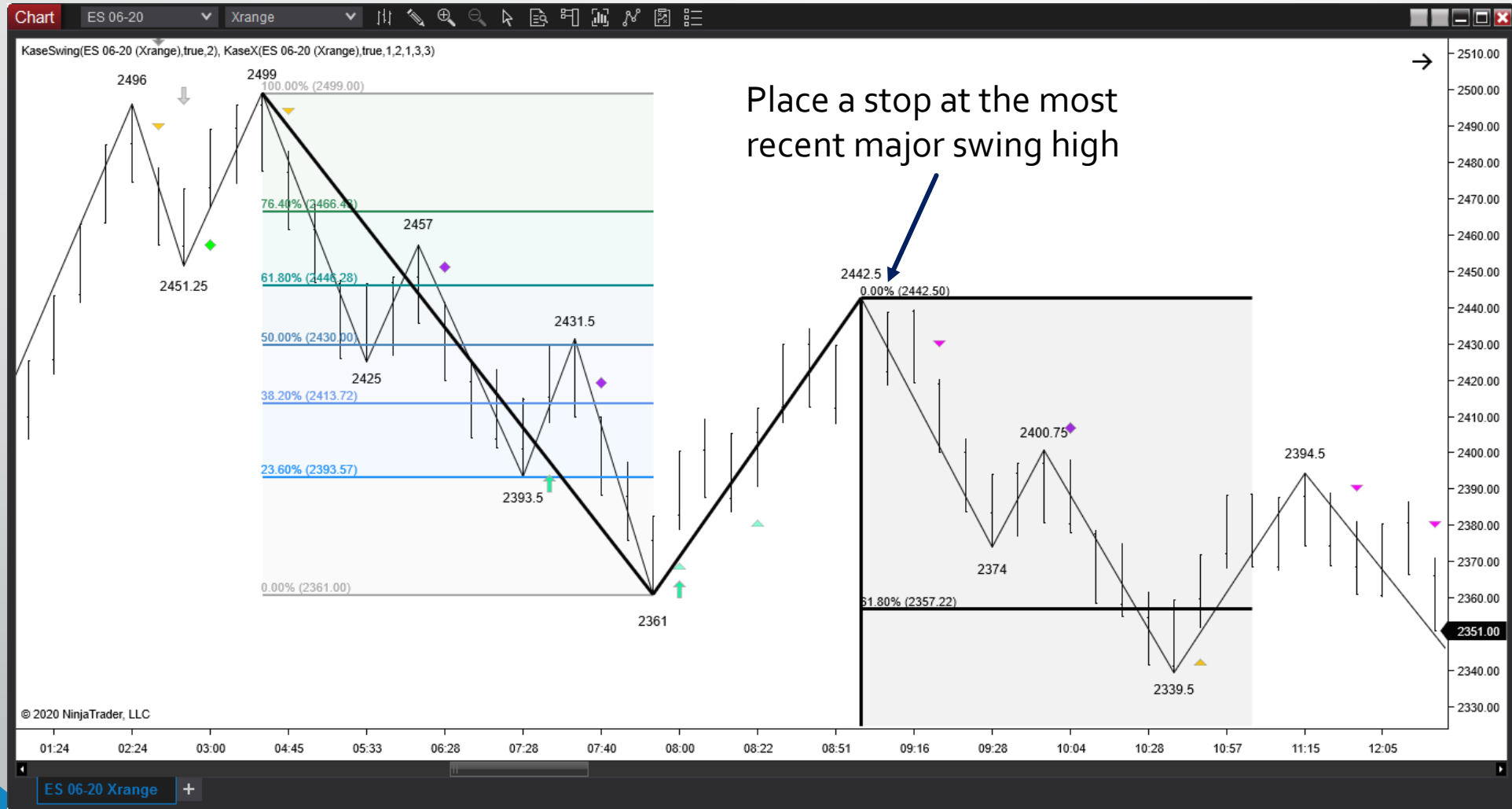
Stops

Swing Highs and Lows (Kase Swing)

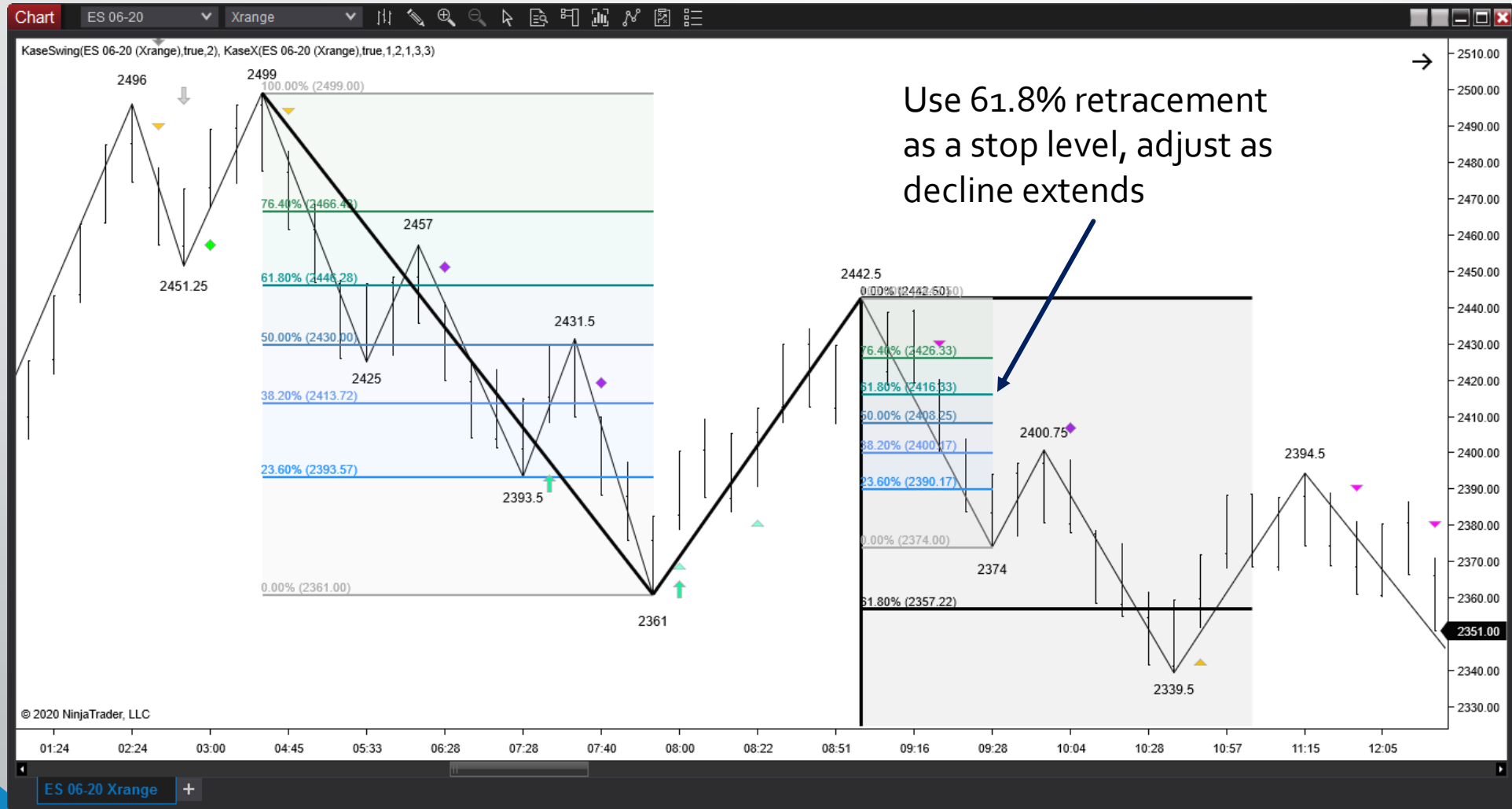
Fibonacci Levels

Kase DevStops

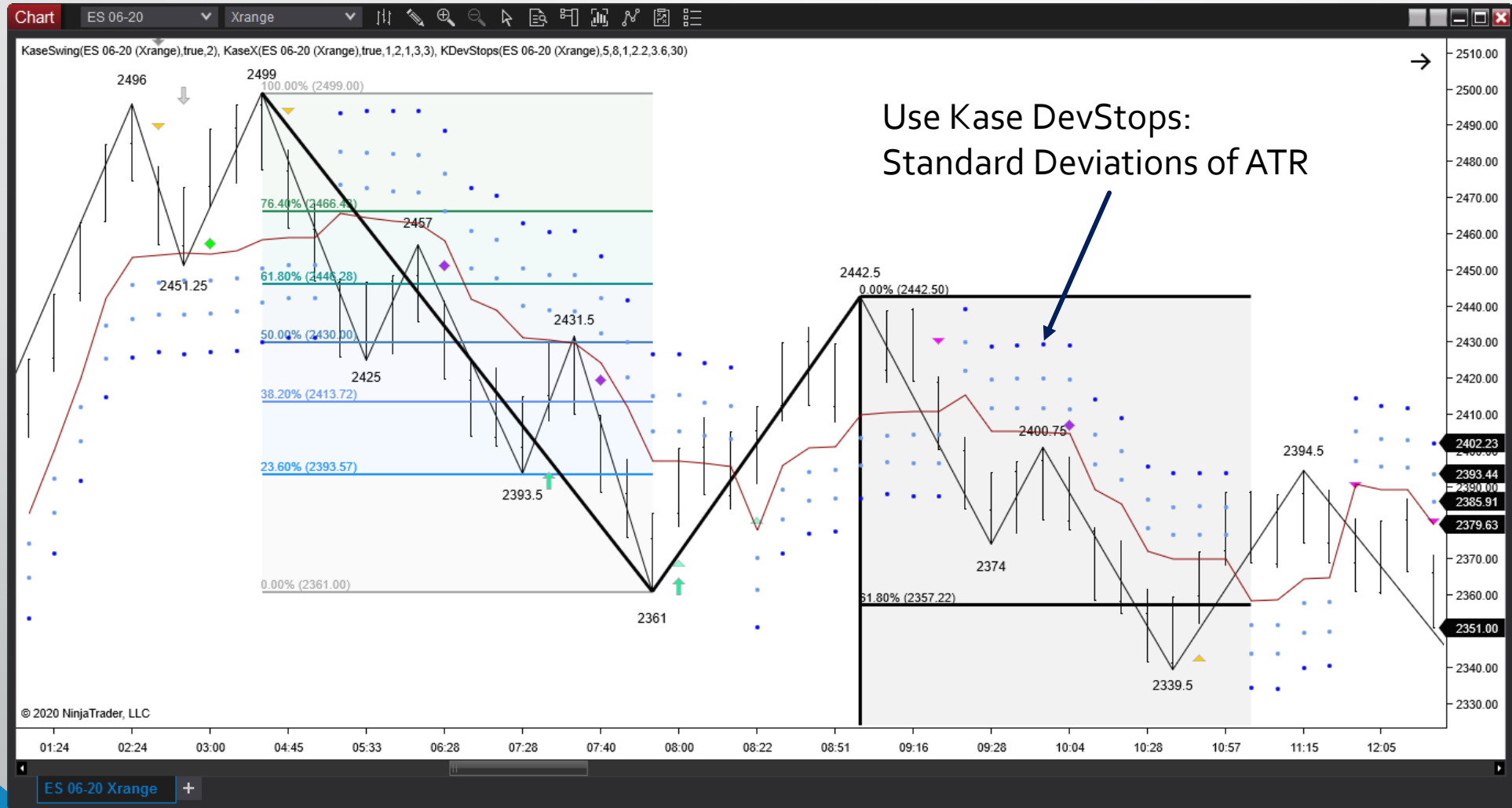
ESM20 – 15 Min Kase Xrange Bar



ESM20 – 15 Min Kase Xrange Bar



ESM20 – 15 Min Kase Xrange Bar





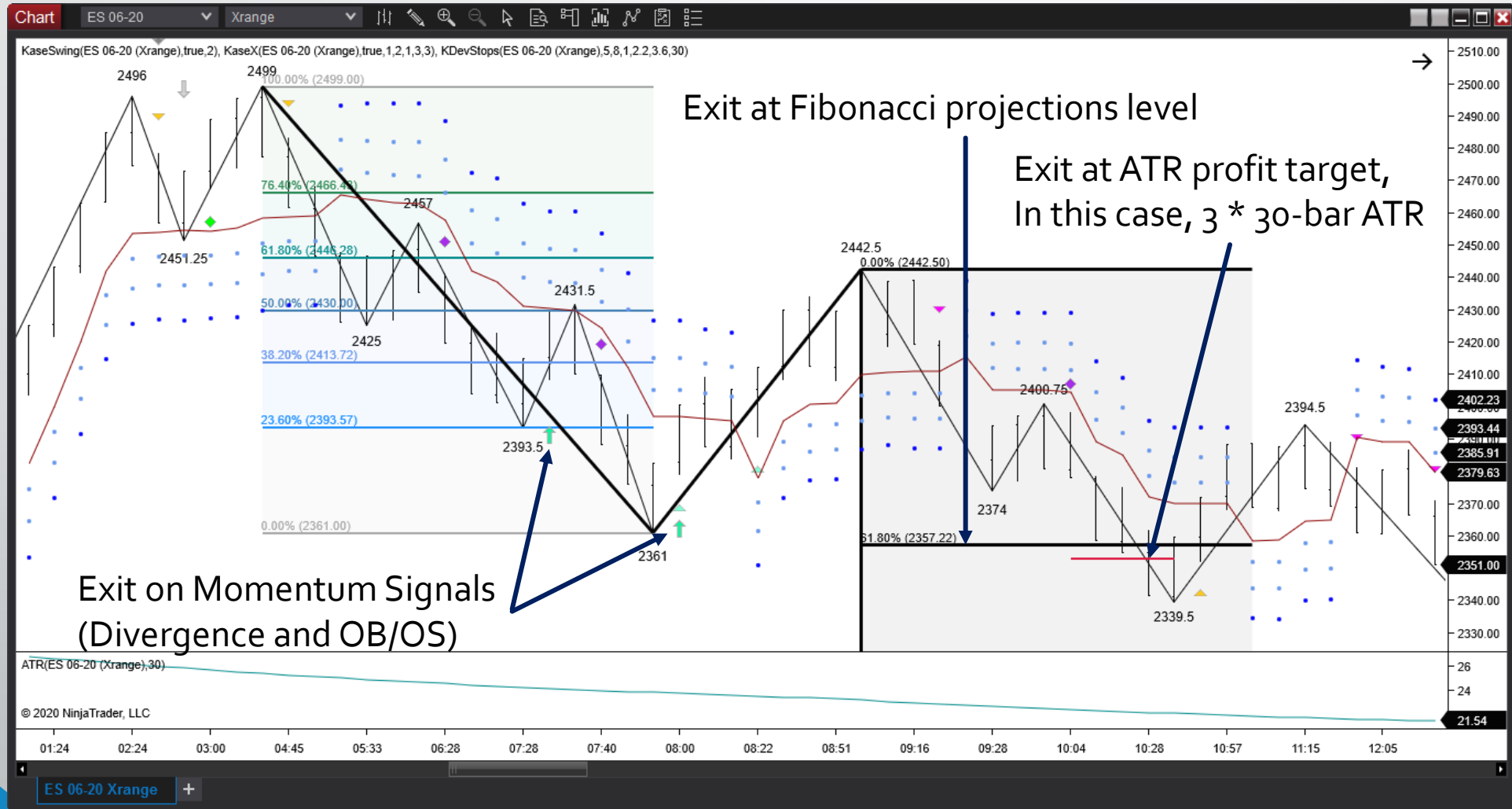
Exit Rules

Kase StatWare and KaseX Momentum Signals

Fibonacci Projection Levels

ATR Profit Target

ESM20 – 15 Min Kase Xrange Bar





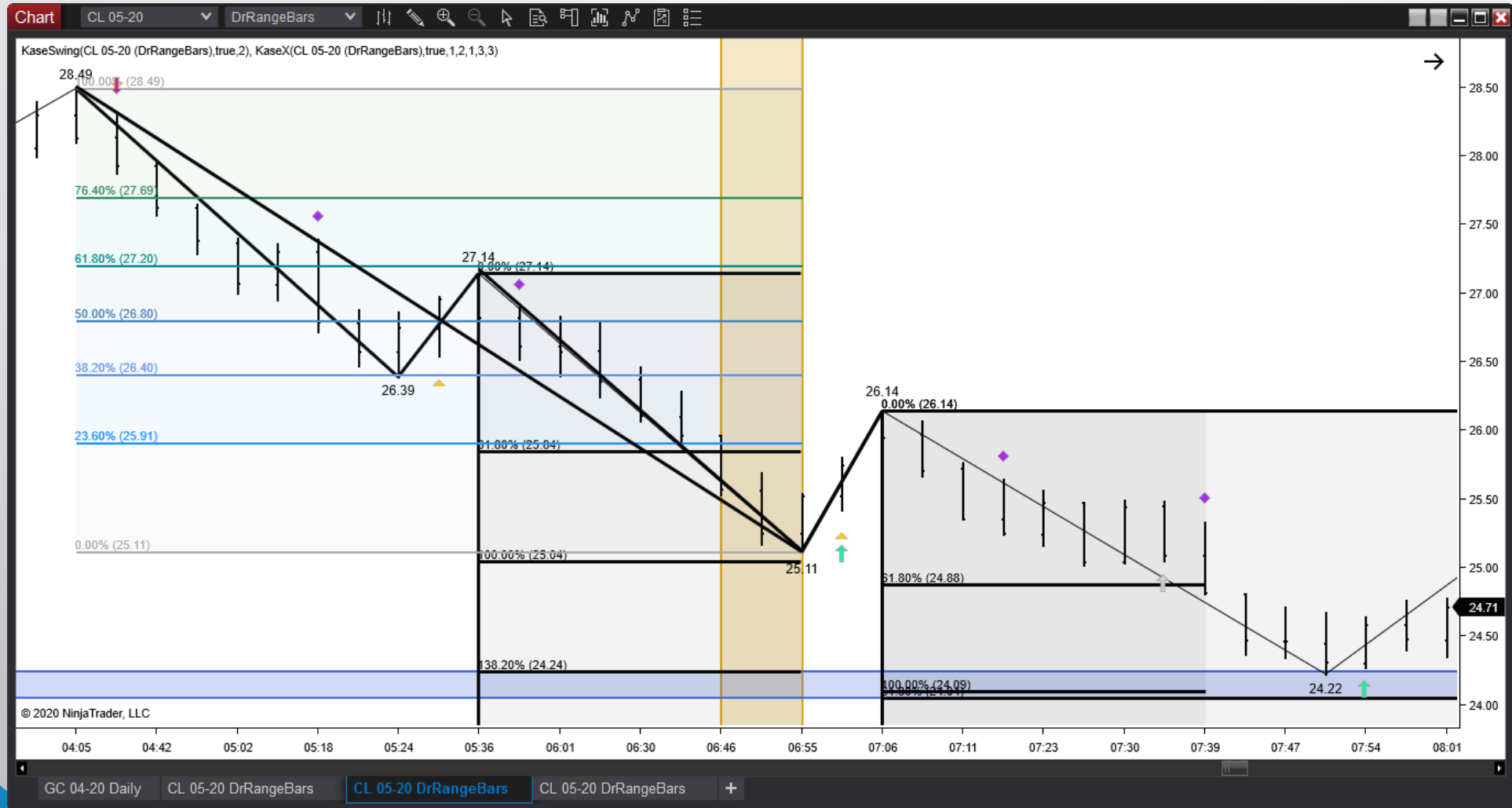
Trade Examples

WTI

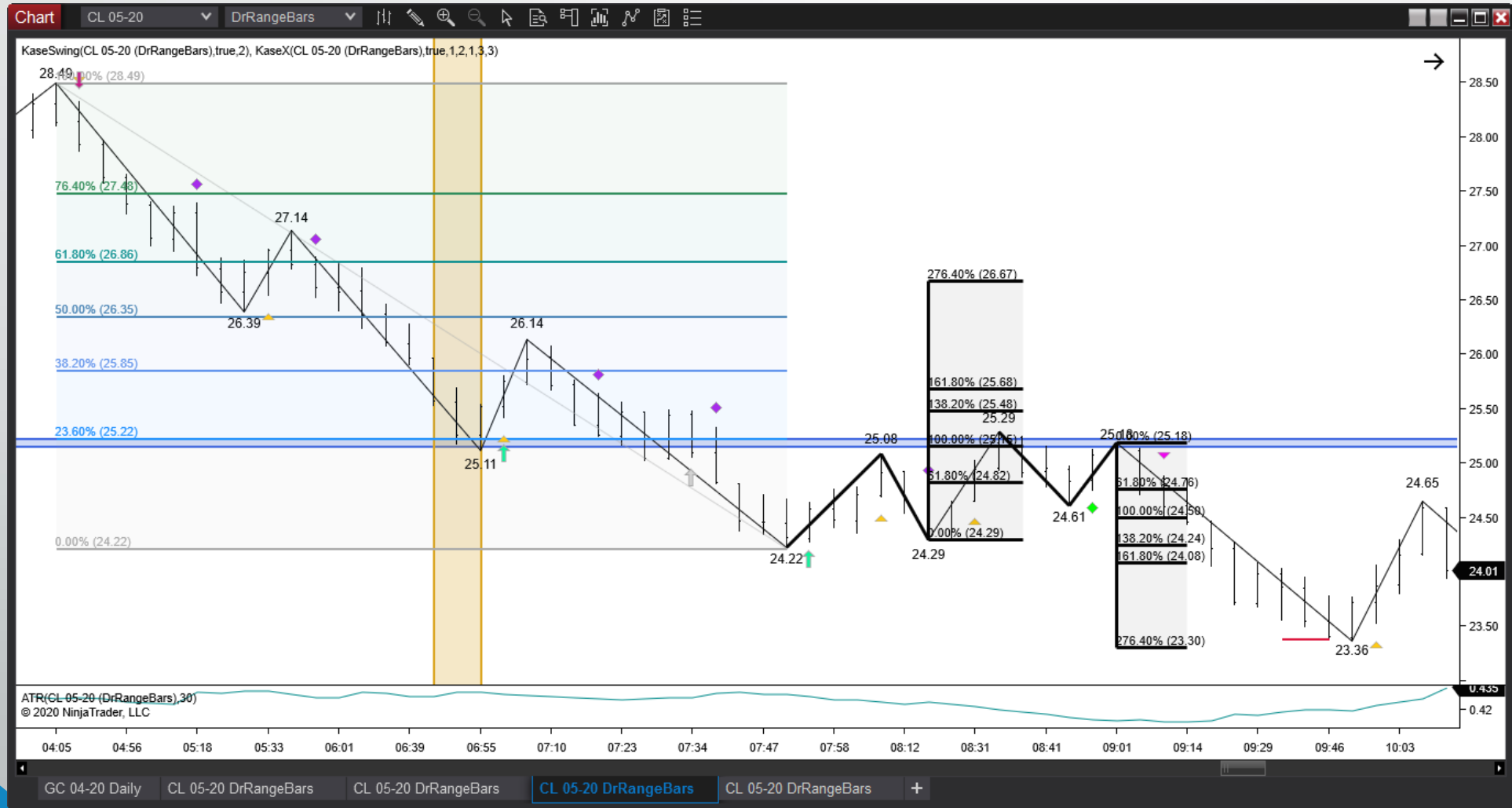
CLK20 - \$1.00 DrRange Bar



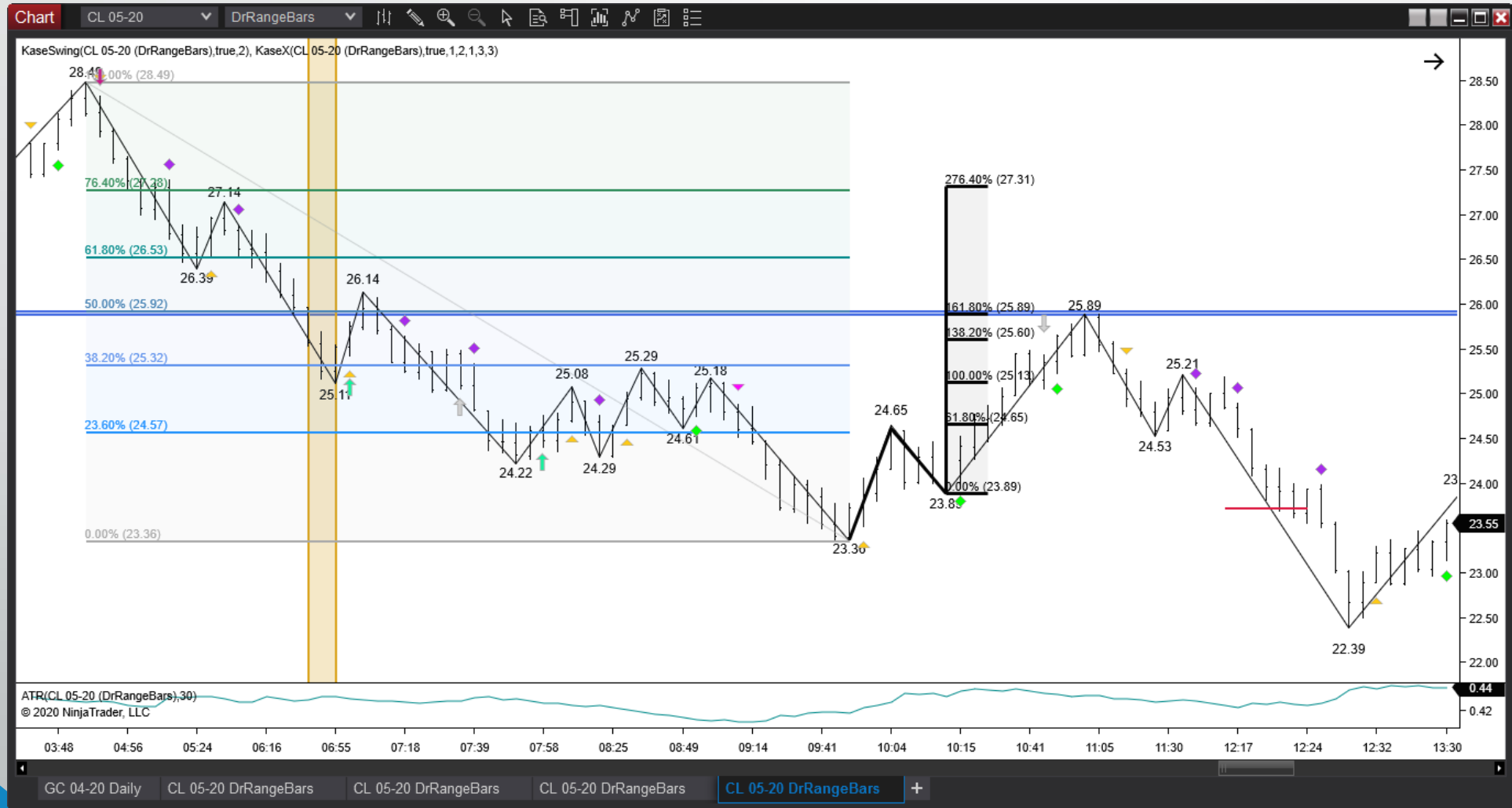
CLK20 - \$0.35 DrRange Bar



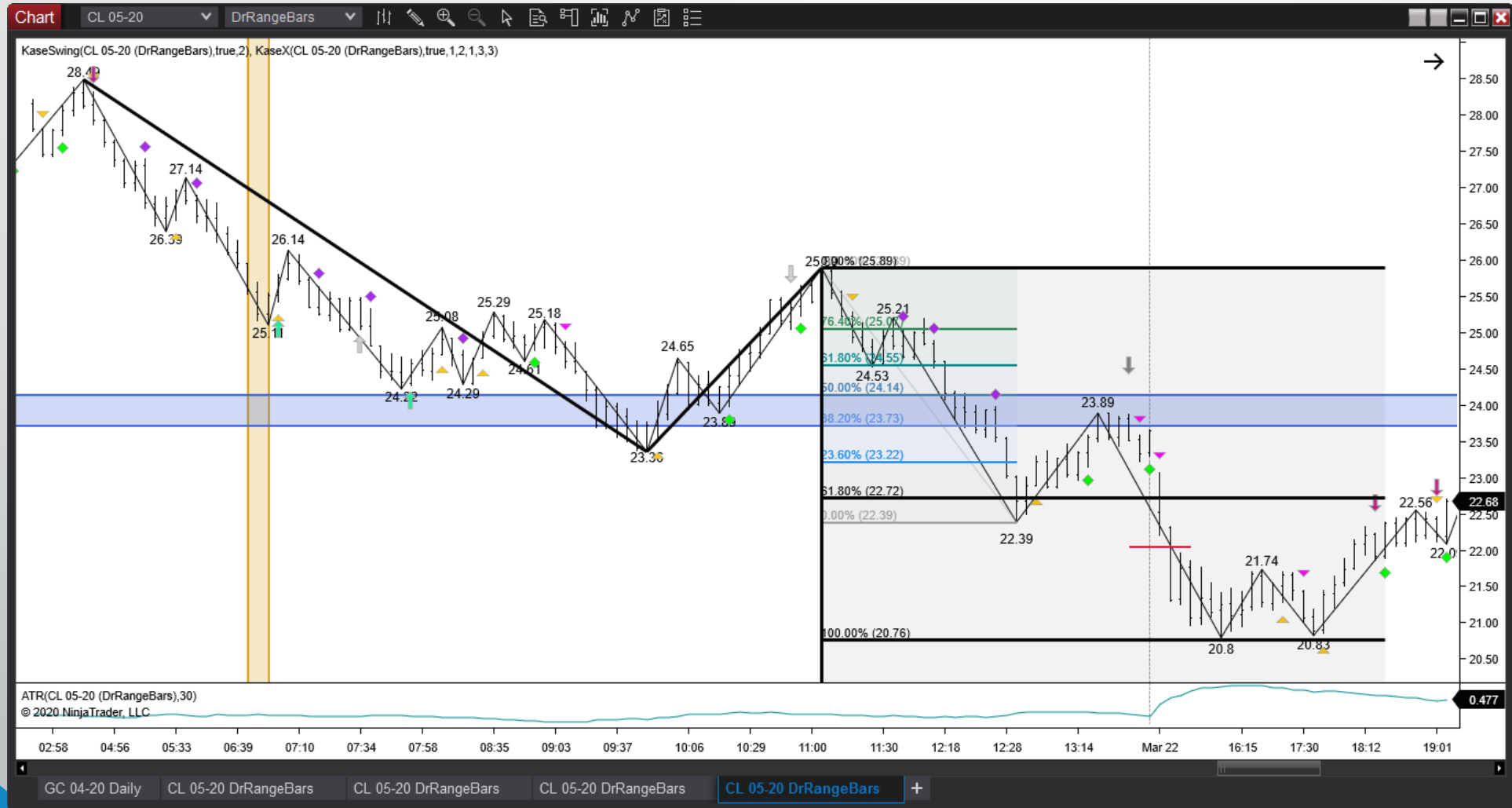
CLK20 - \$0.35 DrRange Bar



CLK20 - \$0.35 DrRange Bar



CLK20 - \$0.35 DrRange Bar





More Information

Dean Rogers, CMT
Senior Analyst
dean@kaseco.com
(505) 237-1600 ext 701

Visit www.kaseco.com for

- StatWare® Archived Videos/Webinars
- Weekly energy and metals market forecasts
 - Weekly and daily subscription newsletter
 - Natural Gas, WTI, Brent, Diesel, Gasoline, Spreads, and ETFs
 - COMEX Precious and LME Base Metals, Gold/Silver Ratio, Spot Gold, Gold ETFs
- Corporate and institutional services

Take a 30-Day Trial Today!

Visit www.kaseco.com/ntwebinar2019/

- Register for a complimentary 30-day trial of **Kase StatWare or KaseX and Xrange bars**
- Download PDF of Presentation
- Sign up for StatWare or KaseX:
 - Month-to-month: \$195
 - **WEBINAR SPECIAL:
13-month discounted rate - \$1895**



@Kaseco



kaseco



@pdeanrogers