



Trade Setups Using Kase StatWare®

Dean Rogers

Senior Analyst



Standard Disclaimer

The risk in trading and hedging commodities, commodity futures, commodity options, derivative instruments and any other financial instrument can be substantial. Both traders and hedgers can be subject to mark-to-market losses and the resultant calls for additional margin deposits, could potentially exceed the original deposit. Anyone contemplating the use of commodities, commodity futures, commodity options, derivative instruments and any other financial instrument for either speculative or hedging transactions should therefore carefully consider whether such activity is suitable based upon commercial requirement and the financial condition of the person or organization so engaged.

Information contained herein or otherwise transmitted by Kase is not to be considered as an offer or advice to sell or a solicitation or advice to buy commodities, commodity futures, commodity options, derivative instruments and any other financial instrument. Kase and Company, Inc. (Kase) makes no guarantees, either express or implied, regarding the application of either its software, or comments, either written or oral. In no way is any information transmitted by Kase including but not limited to publications, class materials, any oral comments by Kase, its employees or sub contractors, any of Kase's text or software products, or any other communication by Kase, its employees or sub contractors, directly or indirectly, in person or via media to be construed as Kase's providing advice or as consulting, either directly or indirectly, as to the advisability of buying or selling futures contracts, any physical commodity, commodity options or any other financial instrument, or any other action. Kase will not be responsible for any errors or omissions, typographical or otherwise. Expressions of opinion are not recommendations relating to Viewer's actions or non actions and are subject to change without notice.

Hypothetical or simulated performance results have certain inherent limitations. Unlike an actual performance record, simulated results do not represent actual trading or hedging. Also, since the trades or hedges have not actually been executed, the results may have under-or-over compensated for the impact, if any, or certain market factors, such as lack of liquidity. Simulated trading and hedging programs in general are also subject to the fact that they are designed with the benefit of hindsight. No representation is being made that any account will or is likely to achieve profits or losses similar to those shown, discussed or transmitted in any way by Kase. **THE RISK OF LOSS IN TRADING AND HEDGING COMMODITIES CAN BE SUBSTANTIAL.** Viewer should, therefore, carefully consider whether such trading or hedging is suitable for the Viewer in light of the Viewer's financial condition. Information provided through any Kase service is not to be considered as an offer to sell or a solicitation to buy commodities, nor does Kase make any guarantees. Expressions of opinion are subject to change without notice.

Webinar Agenda

- Kase Xrange Bars
- Kase Easy Entry System (KEES) - Overview
 - Traditional StatWare Guidelines
 - Scalping Entry
 - Filtering Entries
- Kase Trend (New Indicator)
- Momentum Signals + KEES = Aggressive Entry
 - Kase Trend Stop
 - Kase Trend Profit Target

Kase Xrange Bars

- High-Low Range
- Target range based on underlying time bar
- Adjust to daily changes in volatility
- Tick and time throttles
- Built with ticks
- No fake “ghost” data

| | |
|----------------|----------|
| ▼ Data Series | |
| Price based on | Last ▼ |
| Type | Xrange ▼ |
| MinuteValue | 10 |
| MinTicks | 3 |
| MinSeconds | 3 |

Xrange – CL, 3-Min



Xrange – CL, 30-Min



Kase Easy Entry System (KEES)

Long Signals

- Majority of momentum is permission long
- Longer bar length filter (3x):
 - Long = 1st Class (Blue)
 - Short = 2nd Class (Cyan)
- Bar permission
 - Rising and Closes Up – Big Dot – Entry
 - Falling and/or Closes Down – Small Dot
- Triggers 'L' come after pullback that holds prior swing low

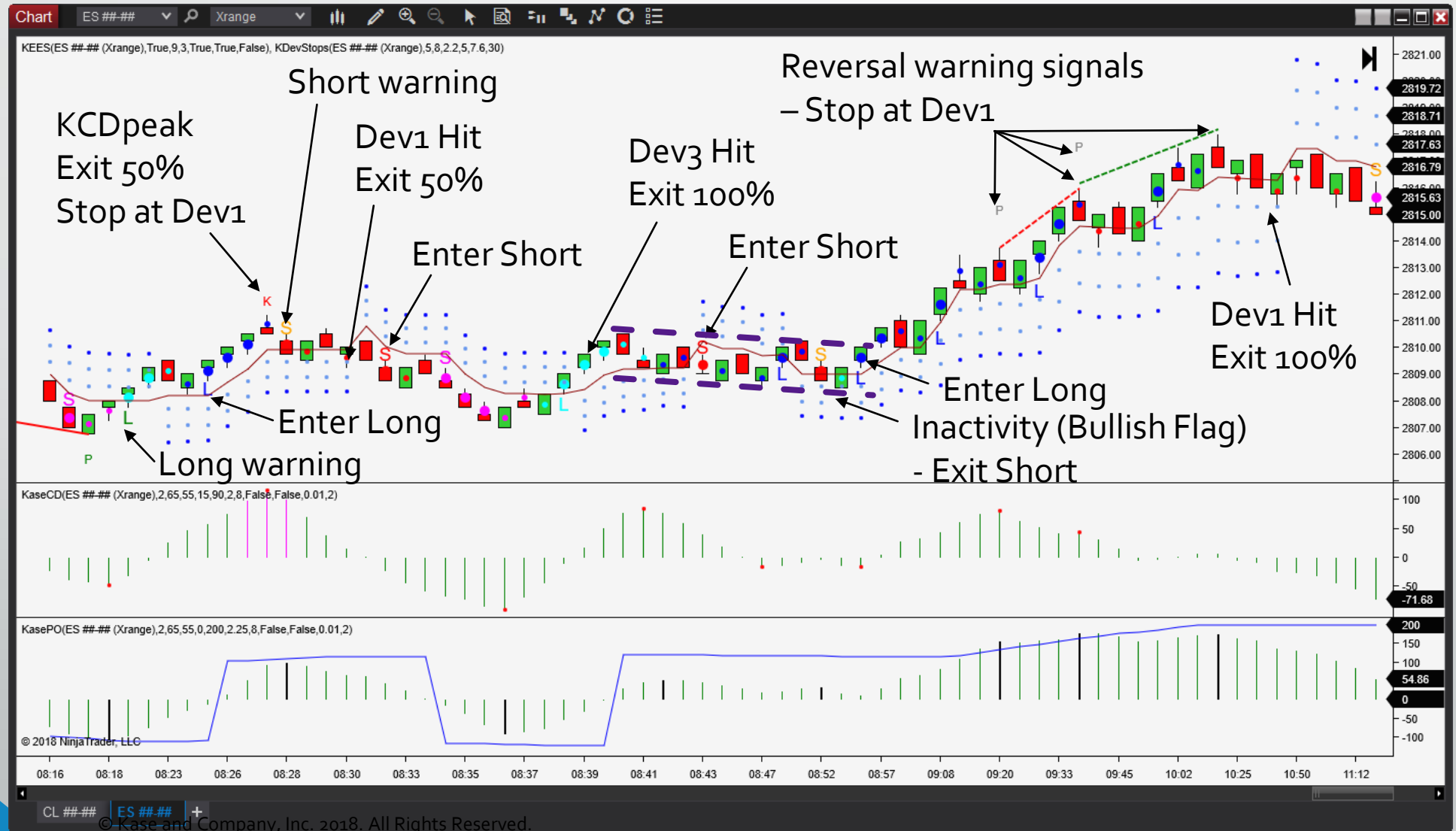
Short Signals

- Majority of momentum is permission short
- Longer bar length filter (3x):
 - Long = 1st Class (Pink)
 - Short = 2nd Class (Red)
- Bar permission
 - Falling and Closes Down – Big Dot – Entry
 - Rising and/or Closes Up – Small Dot
- Triggers 'S' come after pullback that holds prior swing high

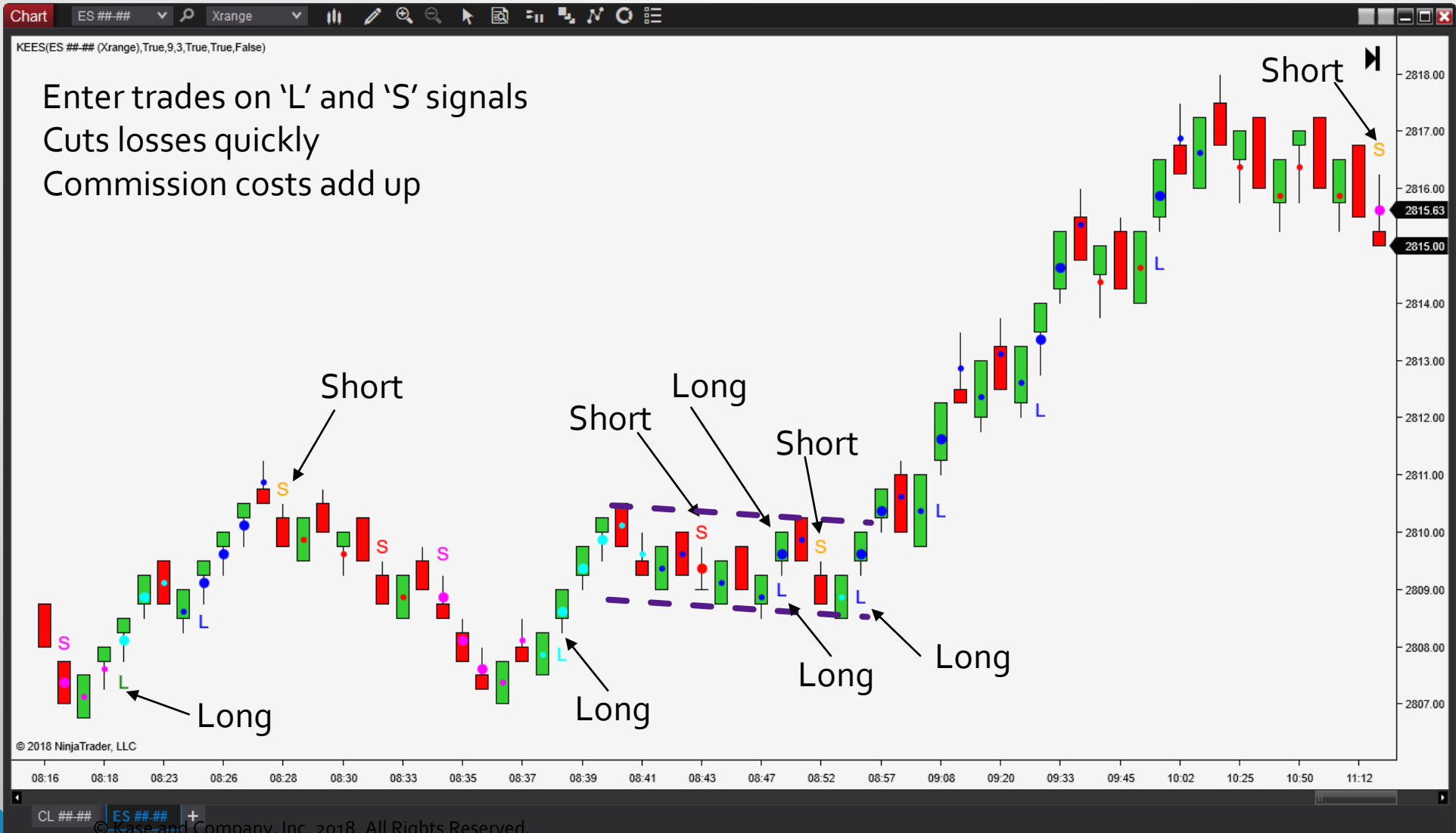
KEES – ES 3-Min Xrange



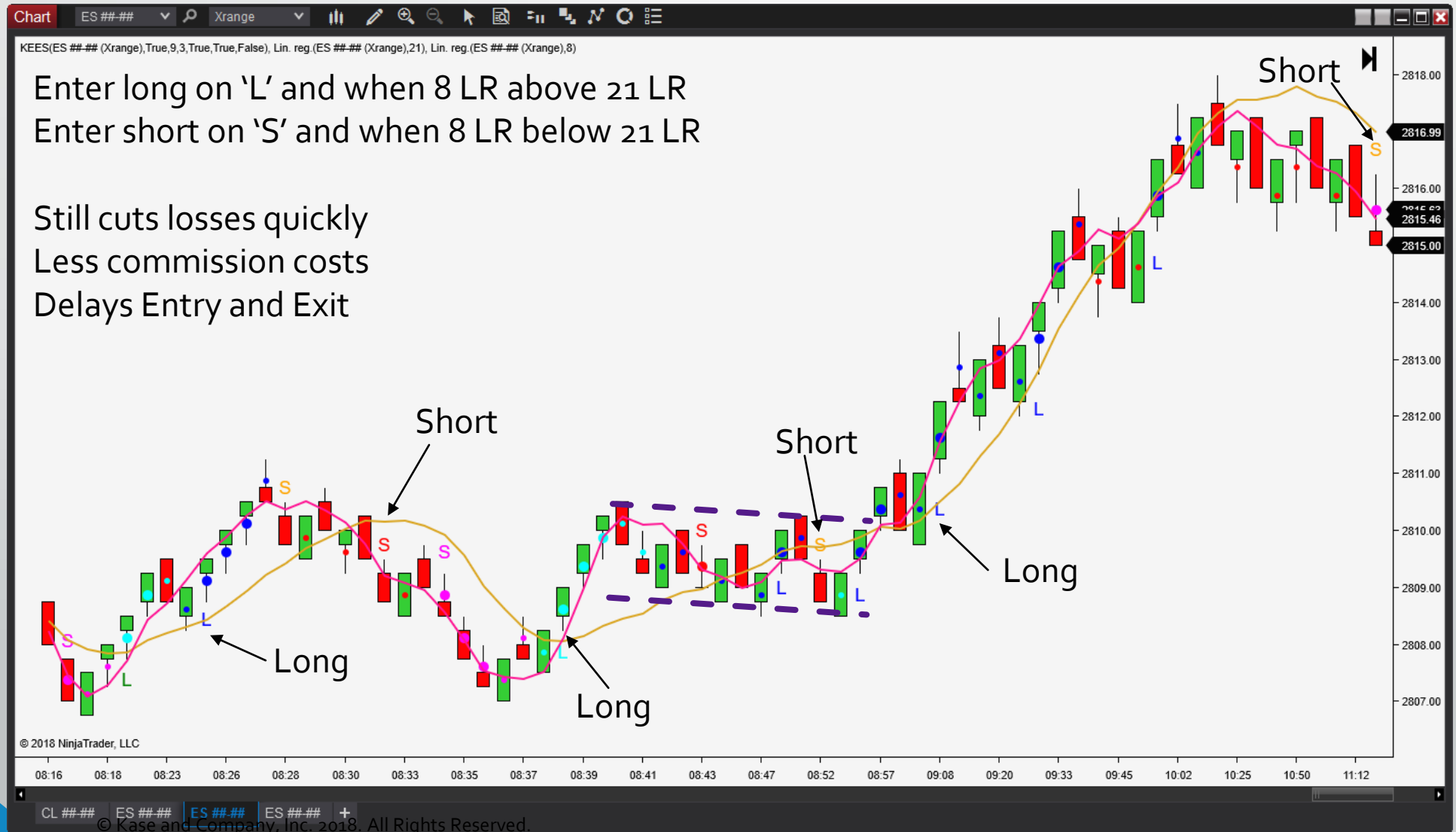
KEES – Traditional StatWare Guidelines



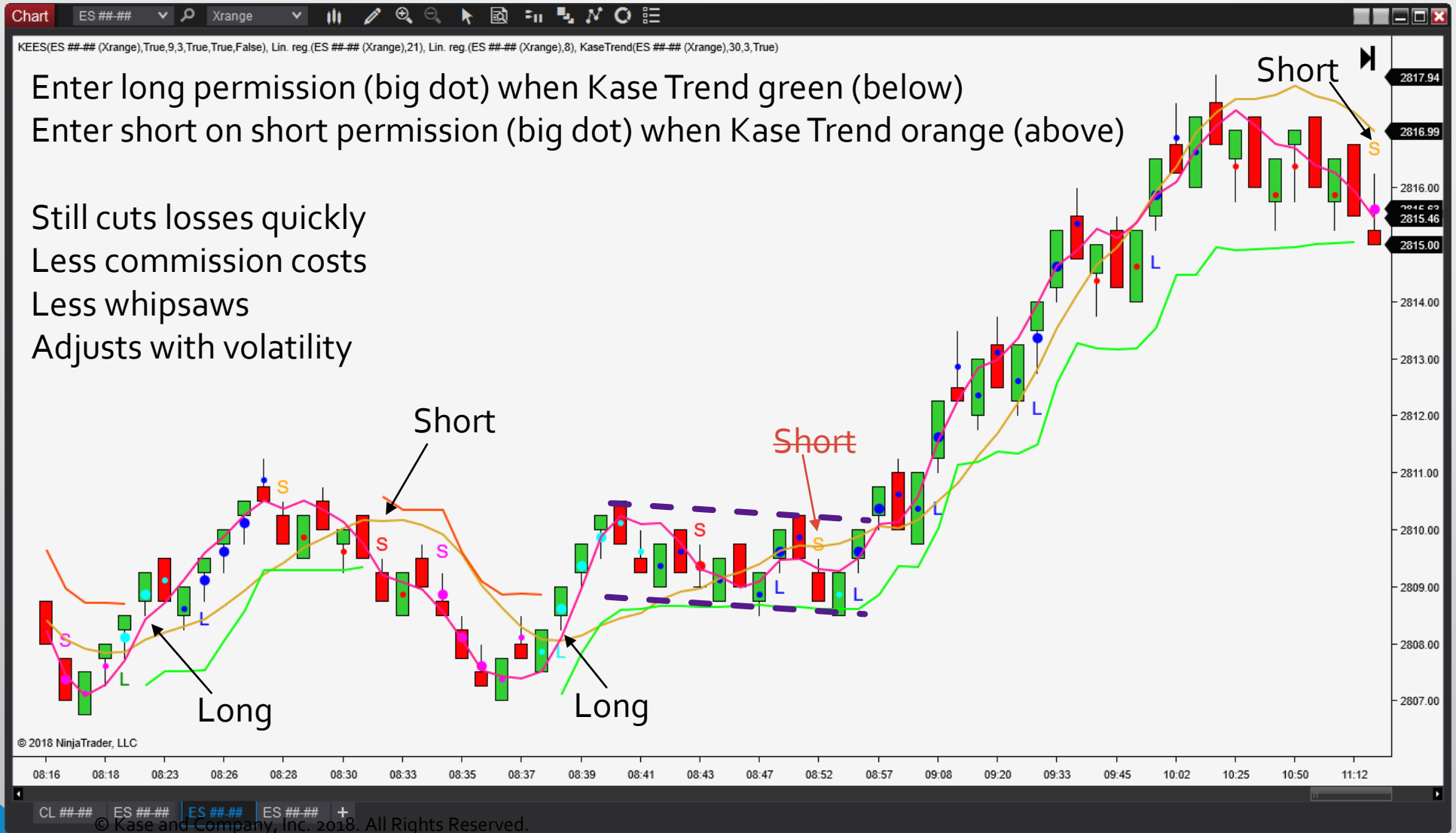
KEES – Scalping Entry



KEES – Scalping Entry with Linear Regression Filter (8, 21)



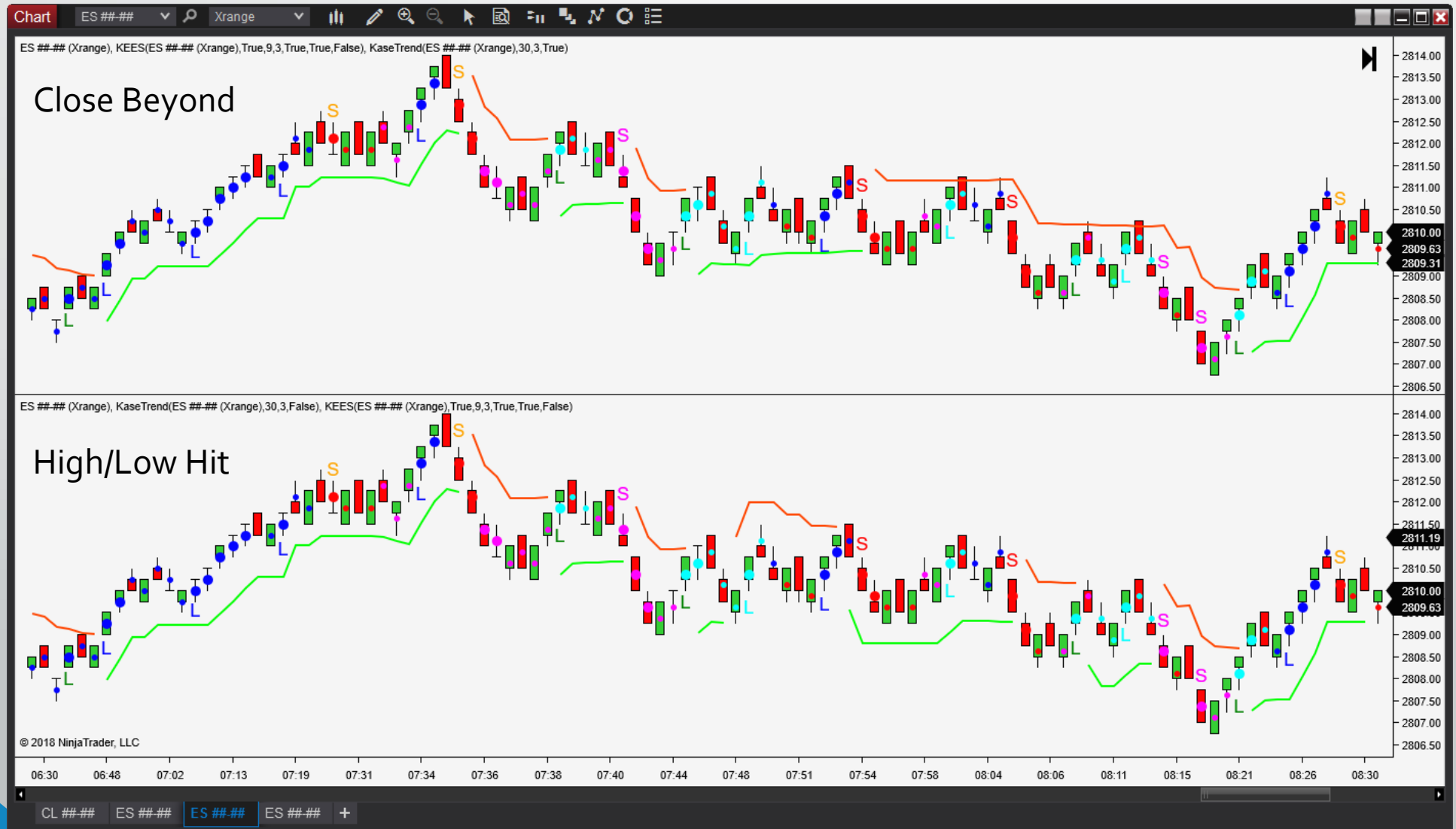
KEES – Scalping Entry with Kase Trend (3 StdDev)



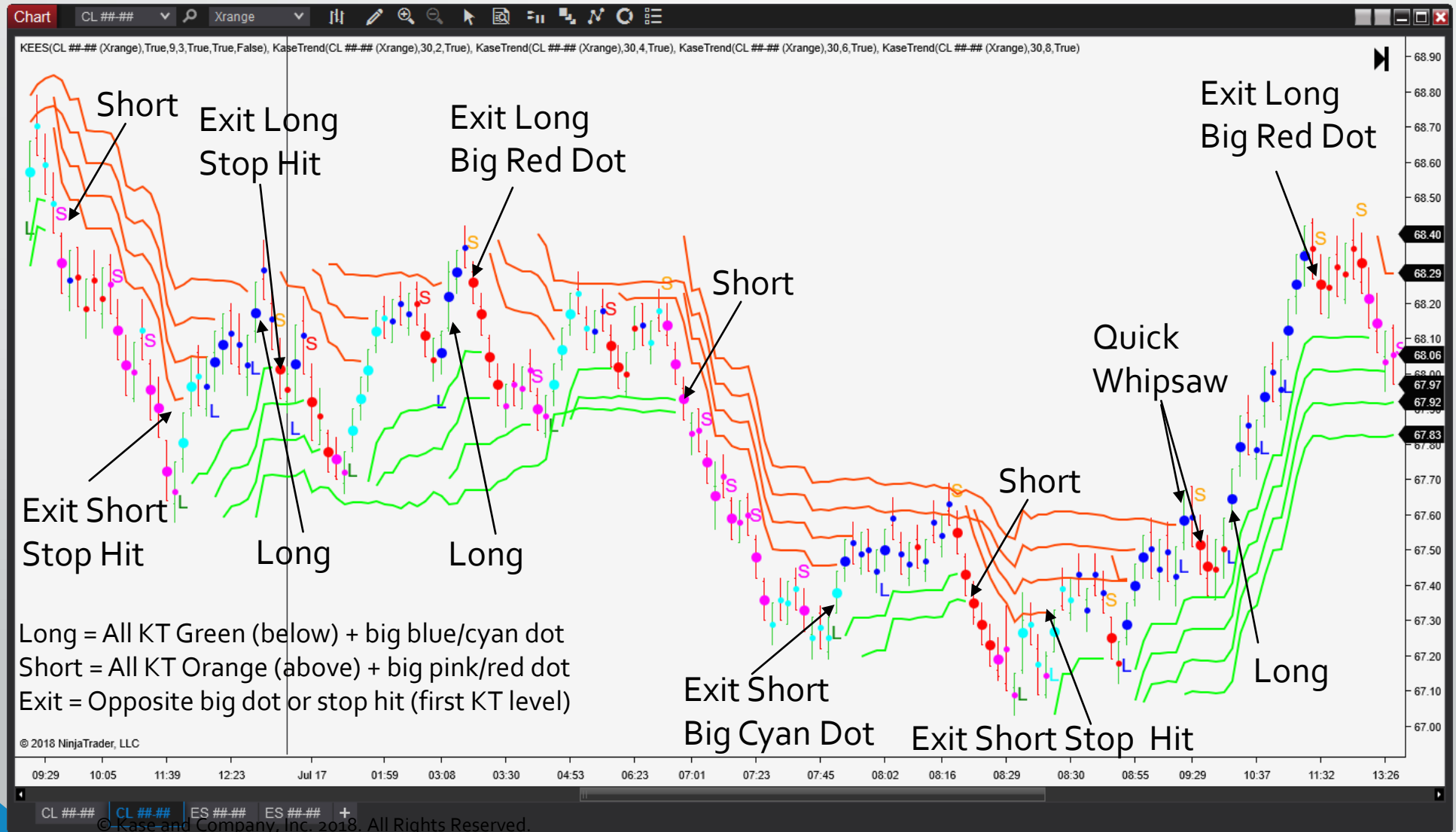
NEW INDICATOR - Kase Trend

- Based on Kase Reversal Amounts
 - Standard Deviations of average Double True Range (DTR)
 - Adjust for changes in Volatility
 - Statistically significant
- Flips on close beyond (or alternately touch of) Kase Trend line
- May be used for:
 - Trend filter (best use, so far)
 - Trade entry and exit
 - Stop level
- Plot multiple Kase Trend indicators to filter choppy trade conditions or scale in/out
- Trend Direction and Trigger Level public data members accessible in NinjaScript

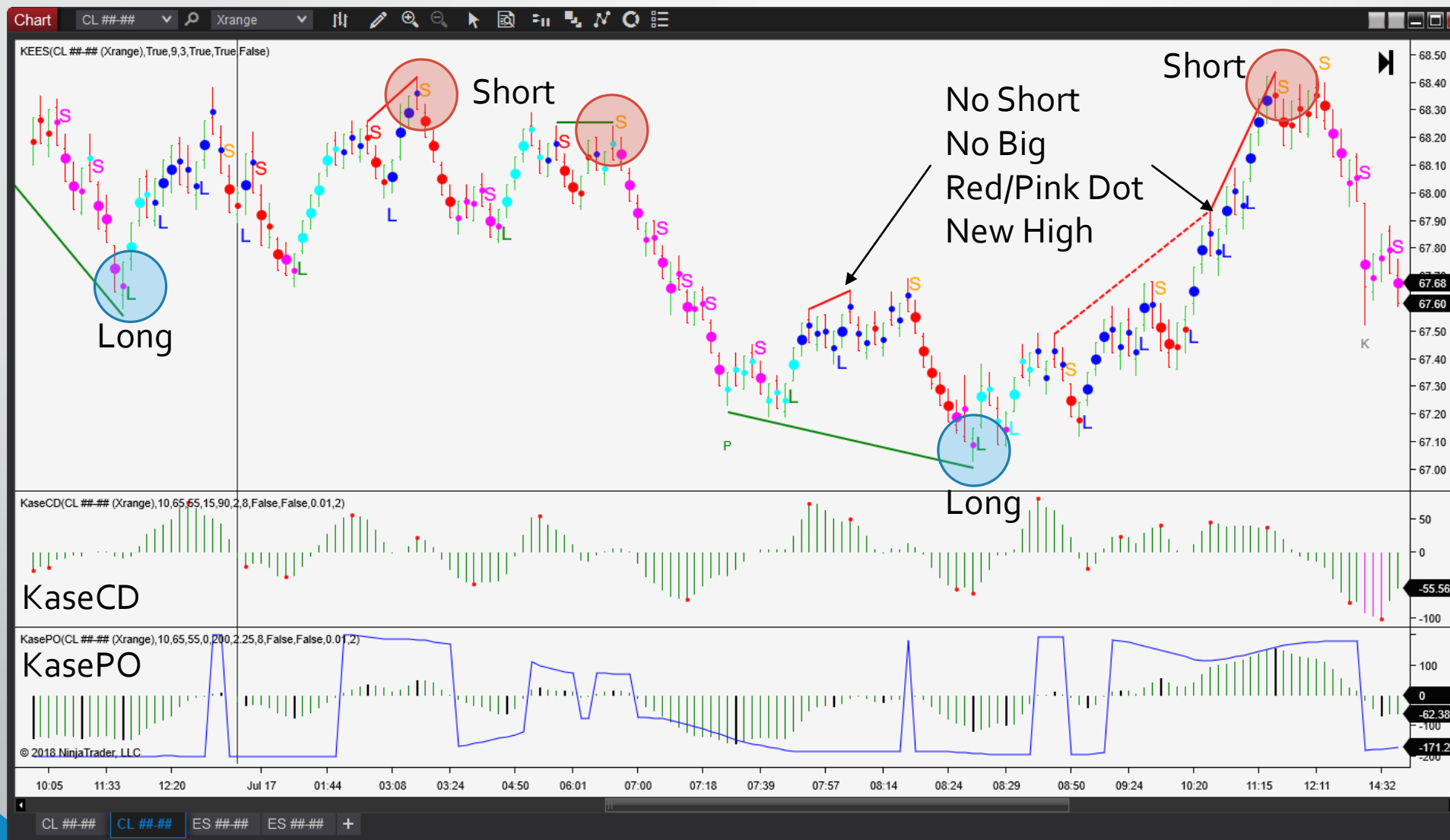
Kase Trend Flip Trigger



Multiple Kase Trend (2, 4, 6, 8 StdDev) CL 30-Min Xrange



Momentum + KEES = Aggressive Entry



Aggressive Entry + Kase Trend Stop



Aggressive Entry + Kase Trend Profit Target



Webinar Recap

- Kase Xrange Bars
- Kase Easy Entry System (KEES) - Overview
 - Traditional StatWare Guidelines
 - Scalping Entry
 - Filtering Entries
- Kase Trend (New Indicator)
- Momentum Signals + KEES = Aggressive Entry
 - Kase Trend Stop
 - Kase Trend Profit Target

Standard Disclaimer

The risk in trading and hedging commodities, commodity futures, commodity options, derivative instruments and any other financial instrument can be substantial. Both traders and hedgers can be subject to mark-to-market losses and the resultant calls for additional margin deposits, could potentially exceed the original deposit. Anyone contemplating the use of commodities, commodity futures, commodity options, derivative instruments and any other financial instrument for either speculative or hedging transactions should therefore carefully consider whether such activity is suitable based upon commercial requirement and the financial condition of the person or organization so engaged.

Information contained herein or otherwise transmitted by Kase is not to be considered as an offer or advice to sell or a solicitation or advice to buy commodities, commodity futures, commodity options, derivative instruments and any other financial instrument. Kase and Company, Inc. (Kase) makes no guarantees, either express or implied, regarding the application of either its software, or comments, either written or oral. In no way is any information transmitted by Kase including but not limited to publications, class materials, any oral comments by Kase, its employees or sub contractors, any of Kase's text or software products, or any other communication by Kase, its employees or sub contractors, directly or indirectly, in person or via media to be construed as Kase's providing advice or as consulting, either directly or indirectly, as to the advisability of buying or selling futures contracts, any physical commodity, commodity options or any other financial instrument, or any other action. Kase will not be responsible for any errors or omissions, typographical or otherwise. Expressions of opinion are not recommendations relating to Viewer's actions or non actions and are subject to change without notice.

Hypothetical or simulated performance results have certain inherent limitations. Unlike an actual performance record, simulated results do not represent actual trading or hedging. Also, since the trades or hedges have not actually been executed, the results may have under-or-over compensated for the impact, if any, or certain market factors, such as lack of liquidity. Simulated trading and hedging programs in general are also subject to the fact that they are designed with the benefit of hindsight. No representation is being made that any account will or is likely to achieve profits or losses similar to those shown, discussed or transmitted in any way by Kase. **THE RISK OF LOSS IN TRADING AND HEDGING COMMODITIES CAN BE SUBSTANTIAL.** Viewer should, therefore, carefully consider whether such trading or hedging is suitable for the Viewer in light of the Viewer's financial condition. Information provided through any Kase service is not to be considered as an offer to sell or a solicitation to buy commodities, nor does Kase make any guarantees. Expressions of opinion are subject to change without notice.



More Information

Dean Rogers
Senior Analyst

dean@kaseco.com

(505) 237-1600 ext 701

Visit www.kaseco.com for

- StatWare® Archived Videos/Webinars
- Weekly energy market forecasts
 - Weekly and daily subscription newsletter
 - Free weekly blog posts on Tuesday (WTI) and Wednesday (Natural Gas)
- Corporate and institutional services

Take a 30-Day Trial Today!

Visit www.kaseco.com/ntwebinar2018/

- Register for a complimentary 30-day trial of **Kase StatWare and Xrange bars**
- Download PDF of Presentation
- Sign up for StatWare subscription:
 - Month-to-month - \$195
 - **WEBINAR SPECIAL!**
13-month discounted rate - \$1895



@Kaseco



kaseco



@pdeanrogers